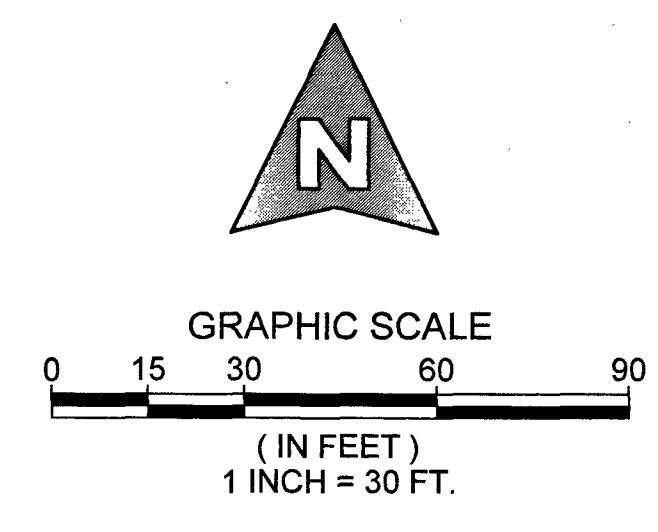
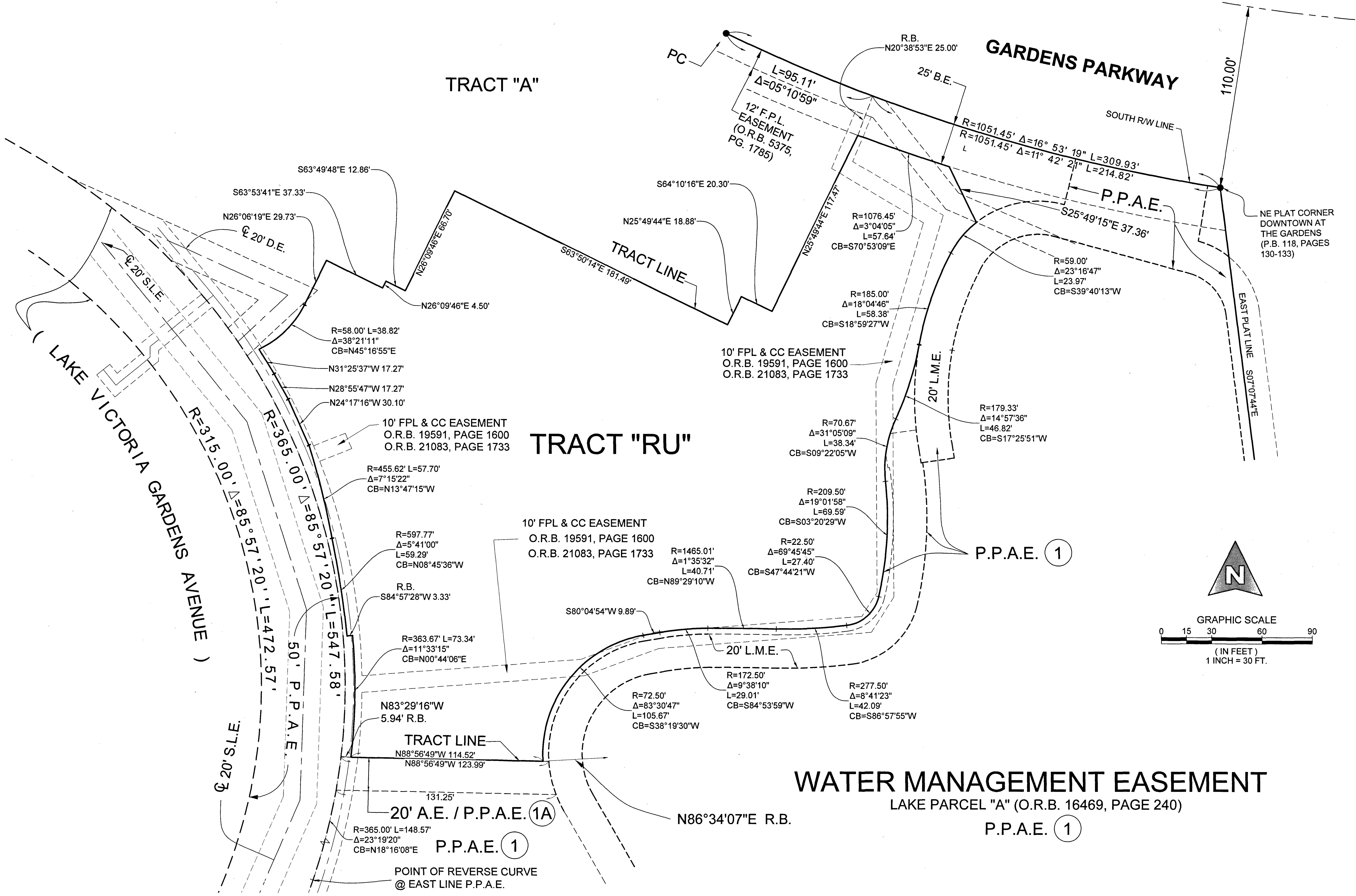


13

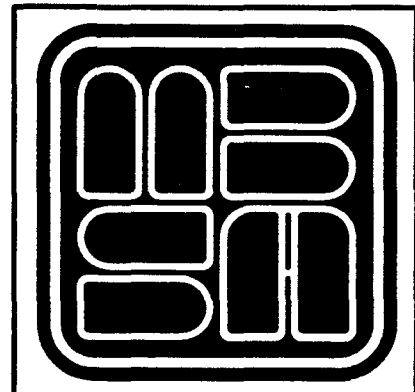
# DOWNTOWN PALM BEACH GARDENS

LYING IN SECTION 6, TOWNSHIP 42 SOUTH, RANGE 43 EAST, CITY OF PALM BEACH GARDENS, PALM BEACH COUNTY, FLORIDA, BEING A REPLAT OF ALL OF DOWNTOWN AT THE GARDENS, AS RECORDED IN PLAT BOOK 118, PAGES 130 THROUGH 133, PUBLIC RECORDS OF PALM BEACH COUNTY, FLORIDA.



**DETAIL "F"**  
 TRACT "RU"

**WATER MANAGEMENT EASEMENT**  
 LAKE PARCEL "A" (O.R.B. 16469, PAGE 240)  
 P.P.A.E. (1)



**MICHAEL B. SCHORAH & ASSOCIATES, INC.**  
 1850 FOREST HILL BLVD., SUITE 206  
 WEST PALM BEACH, FLORIDA 33406  
 EBF# 2438 TEL. (561) 968-0080 FAX. (561) 642-9726 LBF# 2438

DOWNTOWN  
 PALM BEACH GARDENS